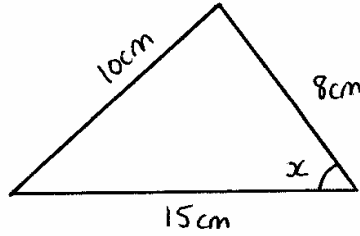


The Cosine Rule

Finding an Unknown Angle

Example 1. Find the value of x



$$\cos A = \frac{b^2 + c^2 - a^2}{2bc}$$

$$\cos x = \frac{15^2 + 8^2 - 10^2}{2 \times 15 \times 8}$$

$$\cos x = 0.7875$$

$$x = 38.05^\circ \text{ (2dp)}$$

Remember to leave this value in your calculator to keep your accuracy