



# gridmagic art projects using a viewfinder

# 3a

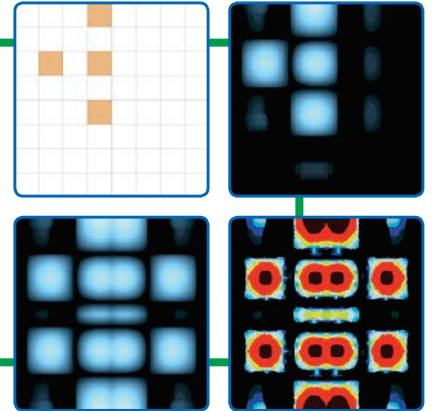
## GRID DESIGN & ARTWORK



1. Start by creating your tile. There's no 'right' or 'wrong' tile design for this project. Here's how we created our tile using the symmetry tool in **Grid Design** and **Boost & Solarise** in **Artwork**.



2. Send your tile to **Mosaic**.



## MOSAIC

3. Start by dragging 4 tiles onto the mosaic grid. You can add more later if you want to.

4. Transform each tile, so it's a different shape and size. Unlock aspect ratio to transform in a single direction.

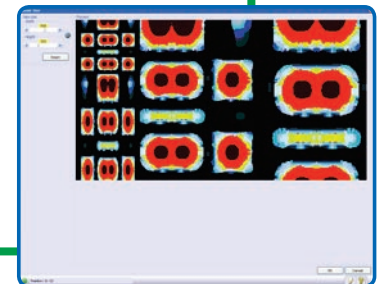
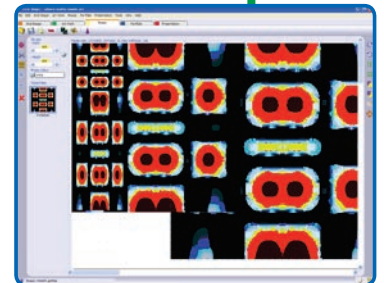
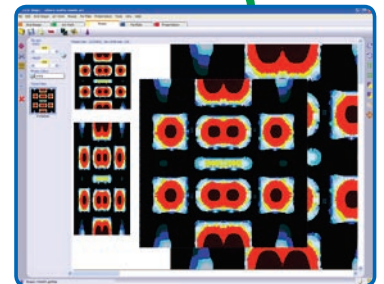


5. Arrange the tiles. Overlap the tiles to create an interesting effect. Right-click on a tile, and you'll be able to put it to the back or bring it to the front.



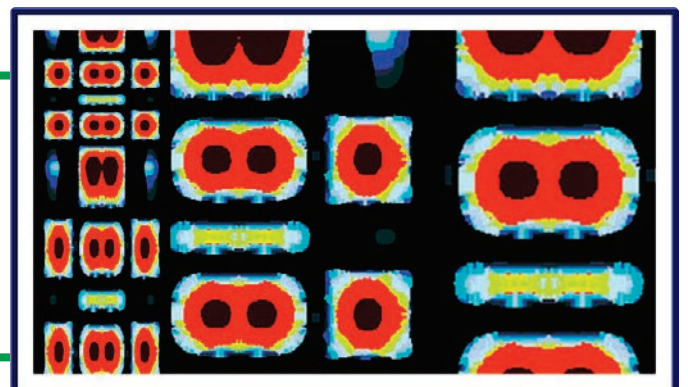
6. Using the resize tool, resize the mosaic grid around your design.

- Use the triangle in the bottom right-hand corner to make the resize window bigger.
- You can use the resize tool as a 'viewfinder' to frame the most visually interesting part of your work.
- If you have version 4.6 or later, you can move your whole design in the resize window.



## PRESENTATION

7. When you send your design to **Presentation** it's cropped to the mosaic grid size.





### Art Project: **Using a viewfinder** Level: **Advanced**

- Maths skills:**
- Enlarge/reduce size (numeric)
  - Aspect ratio
  - Transformation of shape

- ICT skills:**
- Front/back placement & position
  - Resize window
  - Save as

- Art skills:**
- Framing work
  - Using a viewfinder
  - Abstract art forms

**Definition:** Viewfinder: a window or rectangular frame used to view and compose your subject.

**Progression:** Follow this activity with the Level 4a 'Mondrian' Art Project.

**Grid Size/Shape:** Start on the 8x8 grid; the resolution will automatically change to 160x160 after image-processing is applied.

**Technical Points:** This Art Project is better with gridmagic version 4.6 or later. You can't move your design within the resize window with prior versions (though this project will still work). Contact Q4 Technologies for an upgrade.

### Teaching Points:

- This activity uses skills learned in the 2g Advanced Symmetry Art Project and pupils are expected to be able to create a tile by sending back and forward between **Grid Design** and **Artwork**.
- This project is helpful for the level 4a 'Mondrian' as it introduces pupils to transformation of tiles and the viewfinder.
- Using the resize tool as a viewfinder is a useful skill to have for many other level 3 and level 4 art projects.
- You do not need the mosaic 'snap-to-grid' dots or lines to be on as the tiles are overlapped rather than aligned. Careful visual placement works better.
- This activity is a good introduction to 'Abstract art'.

