



gridmagic art projects

advanced symmetry

2g

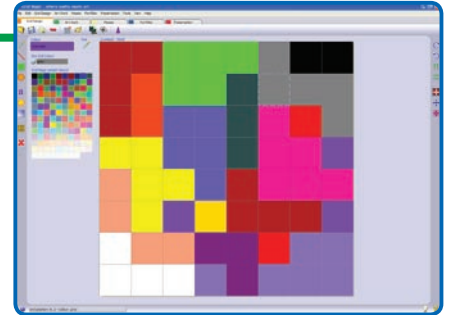
GRID DESIGN



1. Start on an 8x8 grid. Create a random design using the pen tool.



2. Send your work to **Artwork**.

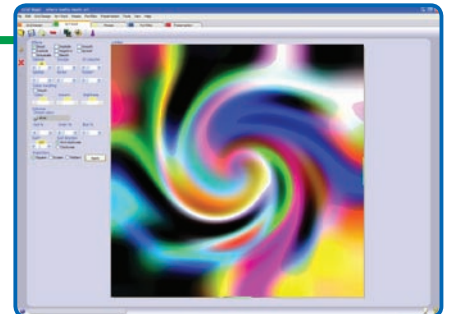


ARTWORK

3. Add a swirl and some other image-processing effects.



4. Send your artwork to **Grid Design**.



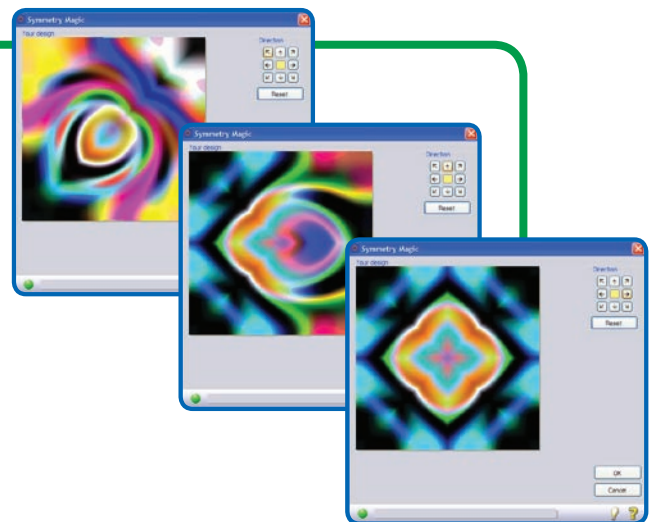
GRID DESIGN



5. Use the Symmetry Magic tool to explore the different symmetrical patterns you can make with your design. There are many different possibilities, depending on the order you select the buttons.



6. Keep a record of the different tiles as you go along by sending them to **Portfolio**.



PORTFOLIO



8. You can use this **Portfolio** later on for other projects. Save this **Portfolio** as **AdvancedSymmetry.gmport** in your folder.





Art Project: **Advanced Symmetry**
Level: **Intermediate**

- Maths skills:**
- Random
 - Planes of symmetry
 - Half and quarter
 - Diagonal, Vertical & Horizontal axis

- ICT skills:**
- Pen tool
 - Send (copy/paste)
 - Save as

- Art skills:**
- Mirrors
 - Reflections
 - Islamic art forms

Definition: Random: without any systematic pattern.

Progression: Follow this activity with the Level 3g 'Sophisticated Symmetry' Art Project.

Grid Size and Shape: This Art Project is most effective starting on a low resolution (small number of cells) grid as the image-processing effects will be more dramatic. The pattern will be converted to high resolution in Artwork.

Teaching Points:

- This activity builds on the 1g Simple Symmetry Art Project, but it's not necessary to have completed that project first.
- It is necessary to complete this project before doing 3g Sophisticated Symmetry as pupils will need to use the Portfolio saved at the end of the project.
- After sending their tile to Portfolio, pupils return to Grid Design and click the undo button to start again from their random design. They must do this each time they send a tile to Portfolio.
- The aim is to create the most stunning symmetrical design possible. As with any random starting point, there's an element of luck to start off with. However, when applying the symmetry in Grid Design, creating an eye catching design is very much down to good subjective judgement and patience.

