



gridmagic art projects

parallel lines 'weaving' pattern

1f

GRID DESIGN



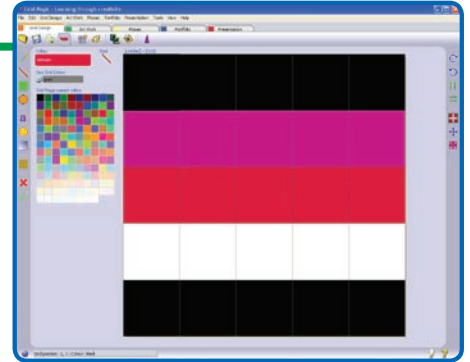
1. Start by changing the grid size to 5x5.



2. Use the line tool. Colour each row or column a different colour.



3. Send to **Artwork**.

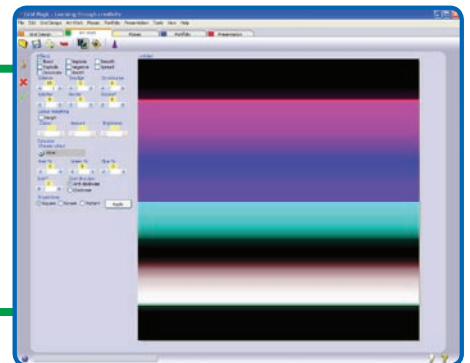


ARTWORK



4. Use image-processing controls that enhance the parallel lines.

5. Send your most effective design to **Mosaic**.



MOSAIC



6. Create 9 'child' tiles by dragging the parent tile onto the mosaic grid

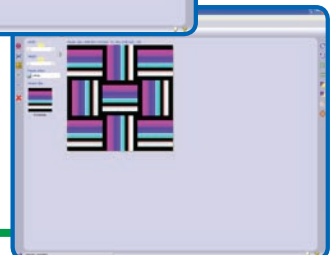
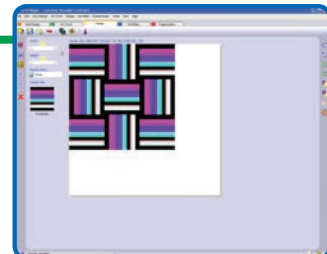


7. Rotate every other tile 90° to create a weaving pattern.



8. Crop the mosaic grid to fit your design.

9. Send the design to **Presentation**

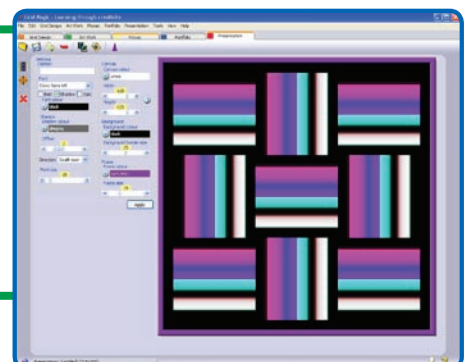


PRESENTATION



10. Add a matching frame and border and your name.

11. Print your parallel lines weaving pattern.





Art Project: Parallel lines 'weaving' pattern.
Level: Beginner

Maths skills:

- Grid size
- Horizontal & vertical
- 90° rotation
- Clockwise / anti-clockwise

ICT skills:

- Line tool
- Copy/paste (Send information)
- Colour palette

Art skills:

- Weaving patterns
- Repeated patterns
- Image-processing effects

Definition: Parallel lines: two (or more) lines running side by side at an equal distance apart.

Progression: Follow this activity with Level 2f 'Textiles: Simple Check'.

Grid Size & Shape: This activity works best starting on a very small grid (one with few cells) as the image-processing effects in Artwork are more dramatic (the fewer the cells the higher the distortion).

Teaching Points:-

- Some image-processing effects will destroy the parallel lines - explode, implode, swirl, rotate, and border.
- Some image-processing effects will maintain the parallel lines but destroy the artistic effects, eg, grayscale, sketch, smooth and spread.
- Some image-processing effects enhance and develop the parallel lines brilliantly - boost, 3D colourise, solarise and morph. These are the ones to use.
- In Mosaic, the rotation can be either clockwise or anti-clockwise, but not both together if you want to achieve the 'weaving' effect.

Top: Solarise+Morph, Bottom: 3D Colourise

